



**WORLD'S BEST  
ALLOY BULLBARS**

  
**CUSTOM ALLOY**  
Australia's Leading Manufacturer of Truck Bullbars

**PN:B4UD5012TSYF**



# **Fitting Guide & Owners Manual UD Quon 4/18 on**

FUPS compatible DLX4 Bullbar with towpin  
VEHICLE FRONTAL PROTECTION SYSTEM (VFPS)  
FOR AIR BAG & ADR COMPLIANT VEHICLES



  
**OFFICIAL BULLBAR  
OF SUPERCARS**

# Index

---

## **Pages 3-5**

ECB's Benefits  
Product Care

## **Pages 6-7**

Stage 1 - Vehicle Preparation  
Stage 2 - Left hand wheel arch preparation  
Stage 3 to 6 - Bumper and headlight removal

## **Pages 8-9**

Stage 7 - Headlight installation  
Stage 8 - Towhook removal  
Stage 8 to 11 - Steel mount and Sonar unit fitment

## **Pages 10-11**

Stage 12 - ECB indicator light installation  
Stage 13 - Protection bar installation  
Stage 14 - Light Wiring  
Stage 15 to 16 - Installation completion

## **Pages 12-13**

Final Checks & Fitting Kit  
Finished Product

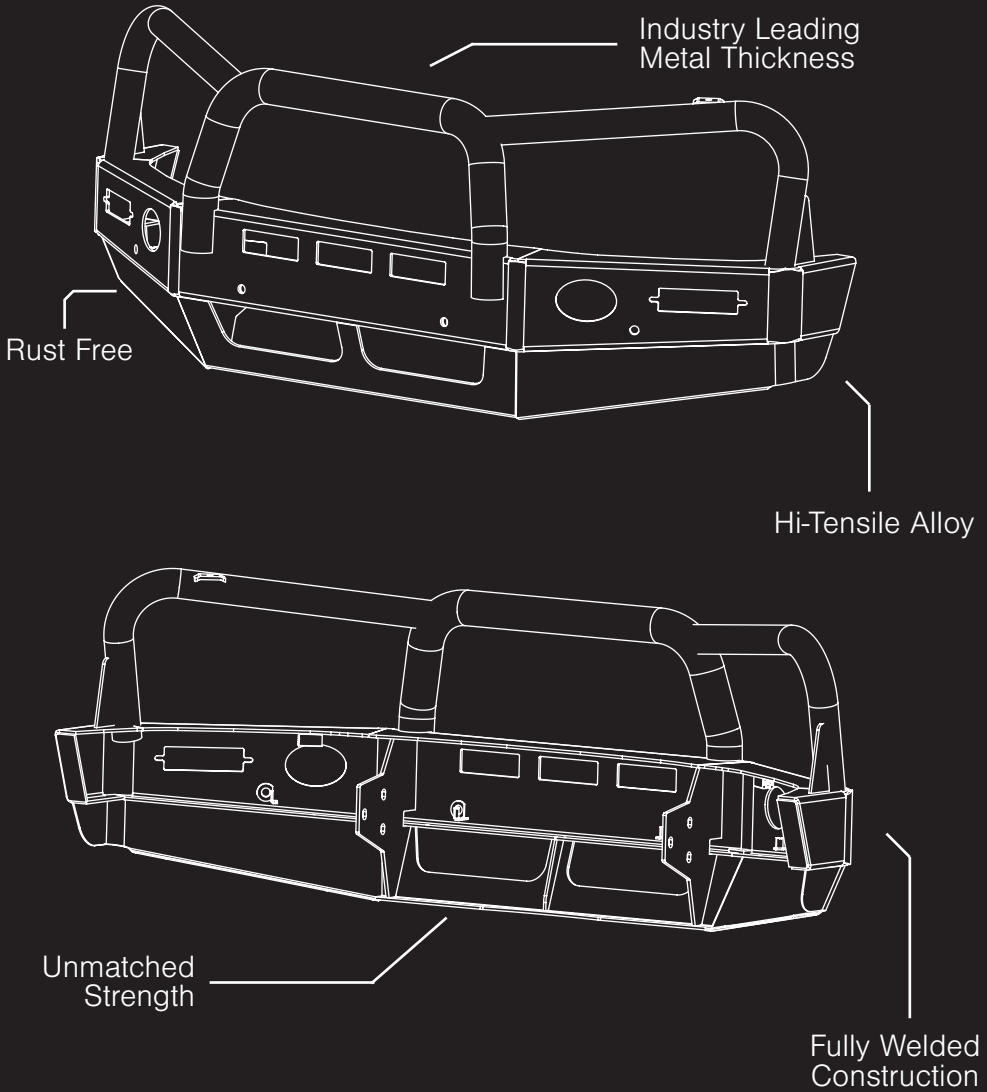
## **Pages 14-15**

Current Promo - TBC  
Warranty Registration

## **Pages 16-17**

Notes

# The Features of Custom Alloy



# **ECB & Custom Alloy's Benefits**

---

## **Built to Perform - Not to a Price**

We are proud to claim that their channels are not jigsaw puzzles that are bolted together, or even multiple sections welded together. Where any welding is required, it is done to the highest standards by qualified welders, not machines.

## **Anti-Corrosive Nature of Alloy**

The composition of our alloy has a very high resistance to corrosion. Rust not only looks unappealing but greatly reduces the strength of the metal. Rust can and will weaken the structural integrity of a steel bullbar effectively rendering it useless over time.

## **Australian Made**

Established in 1971, we utilise over 46 years of experience designing, engineering and building products in Australia to suit Australian conditions. We can ensure the best quality controls and help support the local economy and employ over 90 proud Australians.

## **Weight Saving Benefits**

Our alloy bullbar is typically half the weight of a steel bullbar. Unnecessary suspension upgrades are not required. The reduced weight also contributes to increased fuel economy and less wear and tear on tyres, suspension and braking components.

## **Welds That Work**

We use only the strongest welds and welding techniques to ensure every product is as structurally sound as possible. MIG (Metal Inert Gas) welding techniques are employed ensuring the welds are as thick as the thickest section of alloy's being joined together.

## **Lifetime Warranty**

We provide a lifetime warranty and consumer guarantee on all of our manufactured products. This guarantee highlights the confidence in our ability and provides complete peace of mind for your purchase for the lifetime you own your vehicle.

# Product Care

---

## Polished Products

Being a premium mirror polished finish, regular maintenance will be required to keep that iconic ECB shine. We recommend using our own brand of Aluminium Polish, This formula has been tried and tested and in our opinion is the world's best standard.

**Directions:** Apply a small quantity of Aluminium Polish to a clean soft cloth and rub the metal surface. The longer the rubbing the brighter the surface becomes. Wipe off Aluminium Polish with clean soft cloth. Also suitable for motorised buffing machines. **Note: There are more specific details on the polish bottle. Please read before use.**

## Powdercoated Products

Our powdercoated finishes are very low maintenance, Infact there is actually very little you will ever need to do for this product. Just clean it as you would your car and it will stay looking good as new.

## ECB Aluminium Polish

When you're looking for that showroom finish look for your polished automotive products, you can depend on the no compromise quality of East Coast Bullbars Aluminium Polish. This specifically designed product is the best polish available and we guarantee that this \$#!+ works. With over 40 years of manufacturing polished alloy products we have trialled a large range of different polishes on the market and believe without a doubt that nothing beats the finish quality of East Coast Bullbars Aluminium Polish.

East Coast Bullbars Aluminium Polish is excellent for use by hand and is ideal for polished bullbars, nudge bar and stainless steel products. This polish will clean, polish and protect your product from the elements whilst bringing your products back to that showroom finish look.

# DLX4 Bullbar

---

## Stage 1

- Test drive vehicle to ensure all driver assists are correctly working and to gauge effectiveness. Park on a flat level surface.
- ENSURE NO LOOSE ITEMS ARE IN CAB
- Apply parking brake and lift bonnet.
- Unwrap Protection bar and disconnect mounts. RETAIN BOLTS

## Stage 2

- Release lock on left hand rear of cab and tilt cab.
- Disconnect head lights and fog lights.
- Remove (3)three 10mm head bolts from wiring harness connector block in left hand side wheel arch.
- Remove wiring harness from clips under bumper.
- Remove (2) two 10mm head bolts from inside of bumper under headlights which bolt to FUPS.



## Stage 3

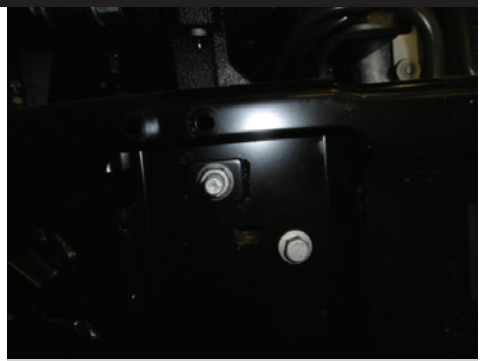
- Tilt cab back to closed position.
- On centre plastic grill, gently pull sides to release plastic clips. Remove grille.



# UD QUON

## Stage 4

- Disconnect sonar from wiring harness.
- Remove (2) two 15mm head bolts and (2) two 15 mm nuts from bumper support.
- Remove bumper from truck.



## Stage 5

Remove outer skin from bumper support.

- Remove (4) four 10mm head bolts from centre of bumper face and three 10 mm head bolts from underside. remove center of skin.
- Remove (3) three 10mm head bolts from beside headlights and two 10mm head bolts from outer back corner of bumper support. Remove headlight skin.



## Stage 6

Remove

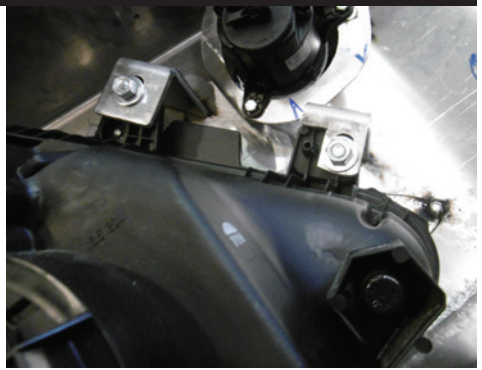
- headlights from bumper (4) four 13mm head nuts.
- fog lights from bumper (3) three 6mm head bolts.
- sonar unit (3) three T25 torx screws retain for refitment.



# DLX4 Bullbar

## Stage 7

- Install headlights into protection bar using (4) four M10 x 70 bolts ,nuts, washers and nyloc nuts supplied. Finger tighten only for alignment later. NOTE: bolts are installed in such a way as to allow alignment of headlight. DO NOT bolt headlight directly to mount without adjustable section incorporated.
- Drill holes in plastic fog light mount out to 6.5 mm.
- Place fog lights in protection bar using



## Stage 8

- Remove tow hook on left hand side, (2) two 21mm head bolts.
- Remove (4) four 18mm head bolts each side of chassis. See photo.



## Stage 9

- Fit steel mount to chassis using (8) eight M14 x 2 x 75 bolts, flat washers, 4 hole mount washer plate, spring washes and nuts, supplied. Finger tighten only.
- Using (4) four M12 x 60 x 1.75 bolt flat washer, 2 hole mount washer plate, spring washer and nut secure front of mount to chassis. On left hand top bolt, fit 26 x 6 relocation mount to wiring harness block. Finger tighten only.





# UD QUON

## Stage 10

- Using 25x6 bracket secure wiring harness block using (2) two M8 x 25 bolts, flat washers, nyloc nuts (supplied).



## Stage 11

- Align mount so square and level . Tighten bolts on front of chassis rail first then side bolts on chassis rail.



## Stage 11

- Feed wiring harness across rear of steel mount and loosely attach to the front of the cross member.
- Feed sonar wiring harness through rear vent. Connect sonar.
- Mount sonar into steel mounting bracket using original T25 torx screws.
- Install plastic protection cover to mounting bracket using (3) three M6 x 25 bolts washes and nyloc nuts.



# DLX4 Bullbar

---

## Stage 12

- Fit ECB LED indicator / park lights into protection bar as per instructions supplied with the LED indicator kit.  
NOTE: Ensure park light is to top



---

## Stage 13

- Mount protection bar to truck
- Align two top front holes using eye bolts, secure protection bar do not tighten.
- Using (2) two 5/8 X 21/2 bolts washes and nyloc supplied secure protection bar to truck at hinge points . Do not over tighten.

---

## Stage 14

- Gently tilt bar forward.
- Extend wiring harness using 300mm wire and solder joiners (supplied). Place wiring in convoluted tubing (supplied).Tape wiring harness to match original equipment harness.
- Incorporate indicator wiring into wiring extensions.
- Connect lights. Zip tie harness into position on vehicle.

# UD QUON

---

## Stage 16

- Lift Protection Bar into position and secure with (4) four eyebolts. Place towpin in position in top of Protection Bar.
- Align lights using adjustable bolts at rear of lights. Lights need to be adjusted level and straight. Tighten all bolts.
- NOTE: Minor adjustment can be made on rear of light assembly.

---

## Stage 17

- Place tilt sticker on rear left hand side of cabin next to tilt lock handle and on inside of door in an area which will be seen by the operator.
- Test vehicle to ensure correct operation of all safety systems

# Final Checks & Fitting Kit

---

## Ensure Number Plate is Clearly Visible

Note: When fitting/refitting the licence plate to the vehicle, ensure there is no obstruction to licence plate vision in accordance with local authorities. If required relocate licence plate to an alternate location.

## Further VFPS Notes

1. Do not attach VFPS to the vehicle using anchorages not intended for this purpose (e.g. engine mounting bolts).
2. Do not use this product for any vehicle make or model, other than those specified by the VFPS manufacturer.
3. Do not remove the plaque or label from the VFPS.
4. Do not modify the structure of the VFPS in any way.
5. No accessory or fitment should project forward of the VFPS forward profile.
6. **Insure these instructions are left with the vehicle owner and/or operator.**

## Important Information

Periodically check bolts and nuts for correct tightness, especially if traveling on rough roads.

## Fitting Kit

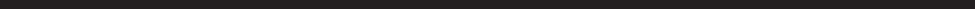
1 - Steel mount bracket	8 - M10 x 1.5 nyloc nuts
2 - Side mount washer plate	2 - M8 x 25 bolts
2 - Front mount washer plate	4 - M8 flat washers
1 - 25 x 6 relocation mount	2 - M8 nyloc nuts
1 - 370mm towpin	9 - M6 x 25 bolts
8 - M14 x 2 x 75 bolts	18 - M6 flat washers
16 - M14 flat washers	9 - M6 nyloc nuts
8 - M14 spring washers	2 - Eye bolts
8 - M14 x 2 nuts	2 - 3/4 x 1 1/2 x 14 g washer
4 - M12 x 1.75 x 65 bolts	1 - ECB Indi / Park kit (ICLED104BL)(fitted to bar)
8 - M12 flat washers	26 - 300mm length single core wire
4 - M12 spring washers	52 - solder joiners
4- M12 x 1.75 nuts	6 - 300mm length 10mm convoluted tubing
8 - M10 x 1.5 x 70 bolts fully threaded	10 - 300mm Zip ties
32 - M10 flat washers	1 - plastic sonar cover (B4UD5012TSY_A2PL)
24 - M10 x 1.5 nuts	2 - Tilt stickers

# Finished Product

---



# Notes

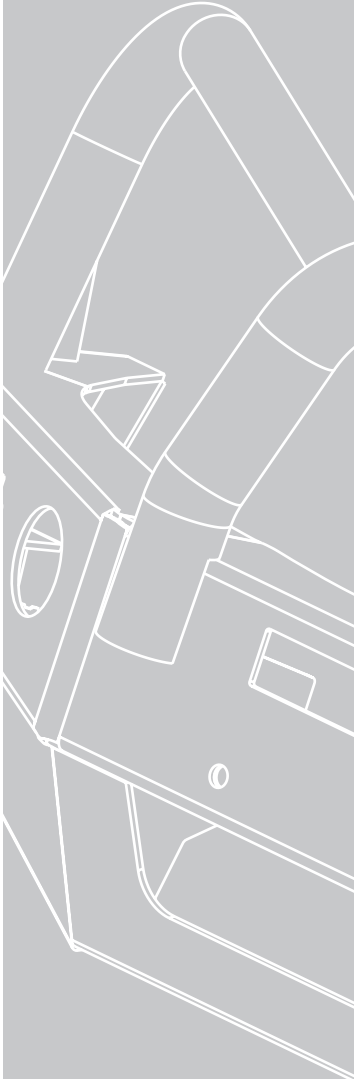


A series of 18 horizontal lines for writing notes, spaced evenly down the page.

\_\_\_\_\_   
 Full Name

\_\_\_\_\_   
 Date

REPLACES: N/A  
REVISED: 24.05.18



07 3897 5750  
[www.customalloy.com.au](http://www.customalloy.com.au)

29 Snook St, Clontarf QLD 4019  
PO Box 122, Margate QLD 4019